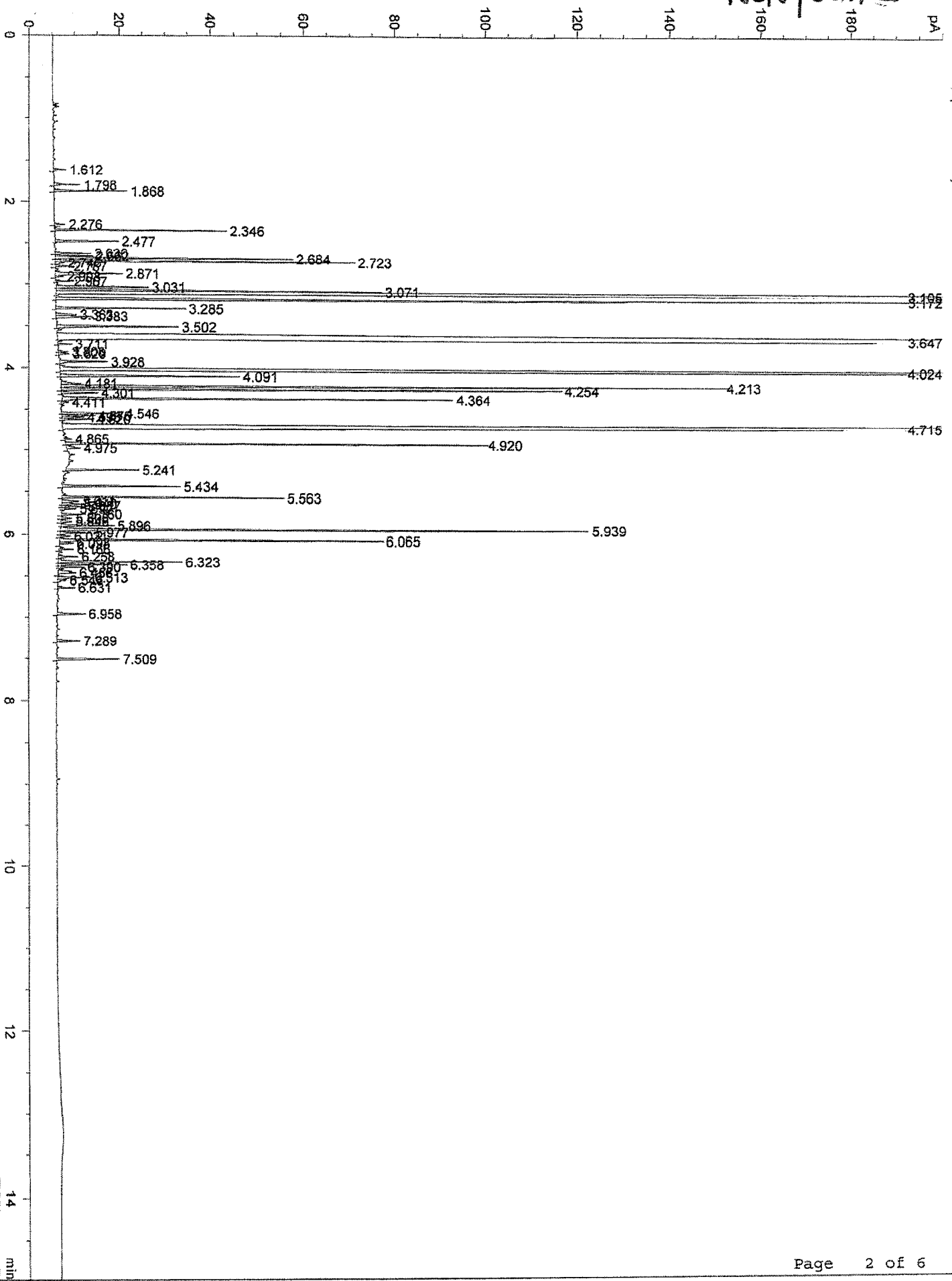


data File C:\CHEM32\1\DATA\0719218A\0719218A 2018-07-19 10-02-17\023F2301.D  
Sample Name: OIL LAVANDIN ABRIALIS PURE FCC

=====  
Acq. Instrument : GC3  
Injection Date : 7/19/2018 8:20:19 PM  
Seq. Line : 23  
Location : Vial 23  
Inj : 1  
Inj Volume : 0.1 µl  
Sequence File : C:\Chem32\1\DATA\0719218A\0719218A 2018-07-19 10-02-17\0719218A.S  
Method : C:\CHEM32\1\DATA\0719218A\0719218A 2018-07-19 10-02-17\CAT18.M (Sequence  
Method)  
Last changed : 1/10/2018 10:57:22 PM  
Method Info : FAST GC GENERAL OIL METHOD 0.10 COLUMNS  
Sample Info : OIL LAVANDIN ABRIALIS PURE FCC C31514

NON POLAR

FID1 A. (023F2301.D)



Sample Name: OIL LAVANDIN ABRIALIS PURE FCC

 =====  
 Area Percent Report  
 =====

Sorted By : Signal  
 Multiplier : 1.0000  
 Dilution : 1.0000  
 Do not use Multiplier & Dilution Factor with ISTDs

Signal 1: FID1 A,

Peak #	RetTime [min]	Type	Width [min]	Area [pA*s]	Height [pA]	Area %
1	1.612	BB	0.0107	1.79879	2.73073	0.03396
2	1.798	BB	0.0124	4.65158	5.74475	0.08781
3	1.868	BB	0.0114	11.70081	16.27517	0.22089
4	2.276	BB	0.0116	1.77825	2.41422	0.03357
5	2.346	BB	0.0112	26.47117	37.75959	0.49973
6	2.477	BB	0.0113	10.03232	14.10820	0.18939
7	2.630	BV	0.0111	5.51894	7.98573	0.10419
8	2.662	VV	0.0116	6.09214	8.26262	0.11501
9	2.684	VV	0.0117	38.75415	51.94668	0.73162
10	2.723	VV	0.0110	44.74340	65.44572	0.84468
11	2.746	VB	0.0135	1.92448	2.03987	0.03633
12	2.787	BB	0.0126	2.57501	3.31093	0.04861
13	2.871	VV	0.0147	15.07362	15.00952	0.28457
14	2.908	VB	0.0117	1.37746	1.84886	0.02600
15	2.967	BB	0.0112	2.16139	3.09158	0.04080
16	3.031	BV	0.0137	17.99804	20.50515	0.33977
17	3.071	VV	0.0125	58.04930	71.21819	1.09588
18	3.105	VB	0.0157	619.67413	570.06329	11.69845
19	3.172	BB	0.0111	164.17004	237.04453	3.09927
20	3.285	BB	0.0110	19.59917	28.74759	0.37000
21	3.363	BV	0.0161	4.67668	4.52251	0.08829
22	3.383	VB	0.0169	9.23584	7.74142	0.17436
23	3.502	BV	0.0125	21.98038	26.98590	0.41495
24	3.647	BV	0.0246	1788.68213	944.51154	33.76743
25	3.711	BB	9.66e-3	1.86450	3.03842	0.03520
26	3.808	BV	0.0120	1.67044	2.16583	0.03154
27	3.829	VB	0.0130	1.97367	2.31113	0.03726
28	3.928	BB	0.0108	7.63712	10.69937	0.14418
29	4.024	BB	0.0151	527.23108	486.52484	9.95327
30	4.091	BB	0.0118	29.68264	39.33607	0.56036
31	4.181	BV	0.0149	4.38584	4.31629	0.08280
32	4.213	VV	0.0125	118.09012	144.55804	2.22935
33	4.254	VB	0.0118	82.73622	109.32204	1.56193
34	4.301	BB	0.0131	6.65645	8.06324	0.12566
35	4.364	BV	0.0120	65.74757	85.56743	1.24121
36	4.411	VB	0.0132	1.34759	1.53446	0.02544
37	4.546	BV	0.0133	11.38556	13.51185	0.21494
38	4.576	VV	0.0109	4.89890	7.26879	0.09248
39	4.595	VV	0.0107	3.38947	4.82754	0.06399
40	4.620	VB	0.0121	5.45314	6.97550	0.10295
41	4.715	BB	0.0206	1156.90723	811.10022	21.84054
42	4.865	VB	0.0119	1.25839	1.64680	0.02376
43	4.920	BB	0.0105	63.28642	91.80435	1.19475
44	4.975	BB	0.0169	3.74560	3.02618	0.07071

Sample Name: OIL LAVANDIN ABRIALIS PURE FCC

Peak #	RetTime [min]	Type	Width [min]	Area [pA*s]	Height [pA]	Area %
45	5.241	BB	0.0103	10.88262	16.22239	0.20545
46	5.434	BB	0.0107	17.31831	26.18050	0.32694
47	5.563	VB	0.0109	32.70706	48.40003	0.61746
48	5.611	BV	0.0146	3.70052	3.70923	0.06986
49	5.640	VV	0.0128	3.51950	3.98600	0.06644
50	5.667	VV	0.0108	3.23383	4.80787	0.06105
51	5.692	VB	0.0124	2.44945	3.05299	0.04624
52	5.760	BB	0.0115	3.79108	5.19086	0.07157
53	5.808	BV	0.0113	1.63586	2.30465	0.03088
54	5.848	VV	0.0147	2.27585	2.37655	0.04296
55	5.896	VV	0.0117	8.83387	11.81987	0.16677
56	5.939	VB	0.0118	86.97237	115.48213	1.64190
57	5.977	BB	0.0124	5.61304	6.97055	0.10597
58	6.021	BV	0.0110	1.67991	2.30212	0.03171
59	6.065	VV	0.0116	51.78597	70.62999	0.97764
60	6.098	VB	0.0115	2.33773	3.04197	0.04413
61	6.166	VV	0.0124	2.57753	3.20513	0.04866
62	6.258	BV	0.0139	4.06762	4.34028	0.07679
63	6.323	VV	0.0123	21.90026	27.48240	0.41344
64	6.358	VV	0.0112	10.76586	15.29738	0.20324
65	6.390	VV	0.0114	4.11460	5.73797	0.07768
66	6.456	VV	0.0200	5.74886	3.94312	0.10853
67	6.513	VV	0.0139	6.94016	7.41765	0.13102
68	6.546	VB	0.0129	1.63818	1.82910	0.03093
69	6.631	BB	0.0110	2.55973	3.73387	0.04832
70	6.958	BB	0.0126	5.11196	6.20174	0.09651
71	7.289	BB	0.0123	4.06770	5.12225	0.07679
72	7.509	BB	0.0119	10.76622	14.04519	0.20325

Totals : 5297.06284 4411.74646